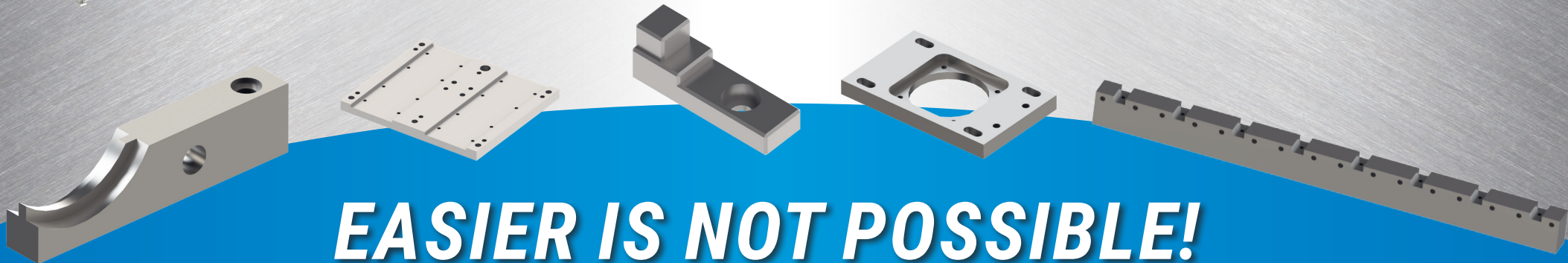
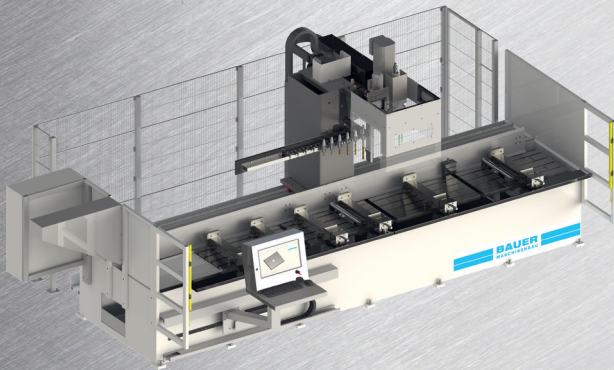


MANUFACTURE **THESE PARTS**
WITHOUT **CNC KNOWLEDGE?**



WE HAVE **THE MACHINE**
FOR **AUTOMATION**
WHEN **DRILLING** AND **MILLING**



EASIER IS NOT POSSIBLE!

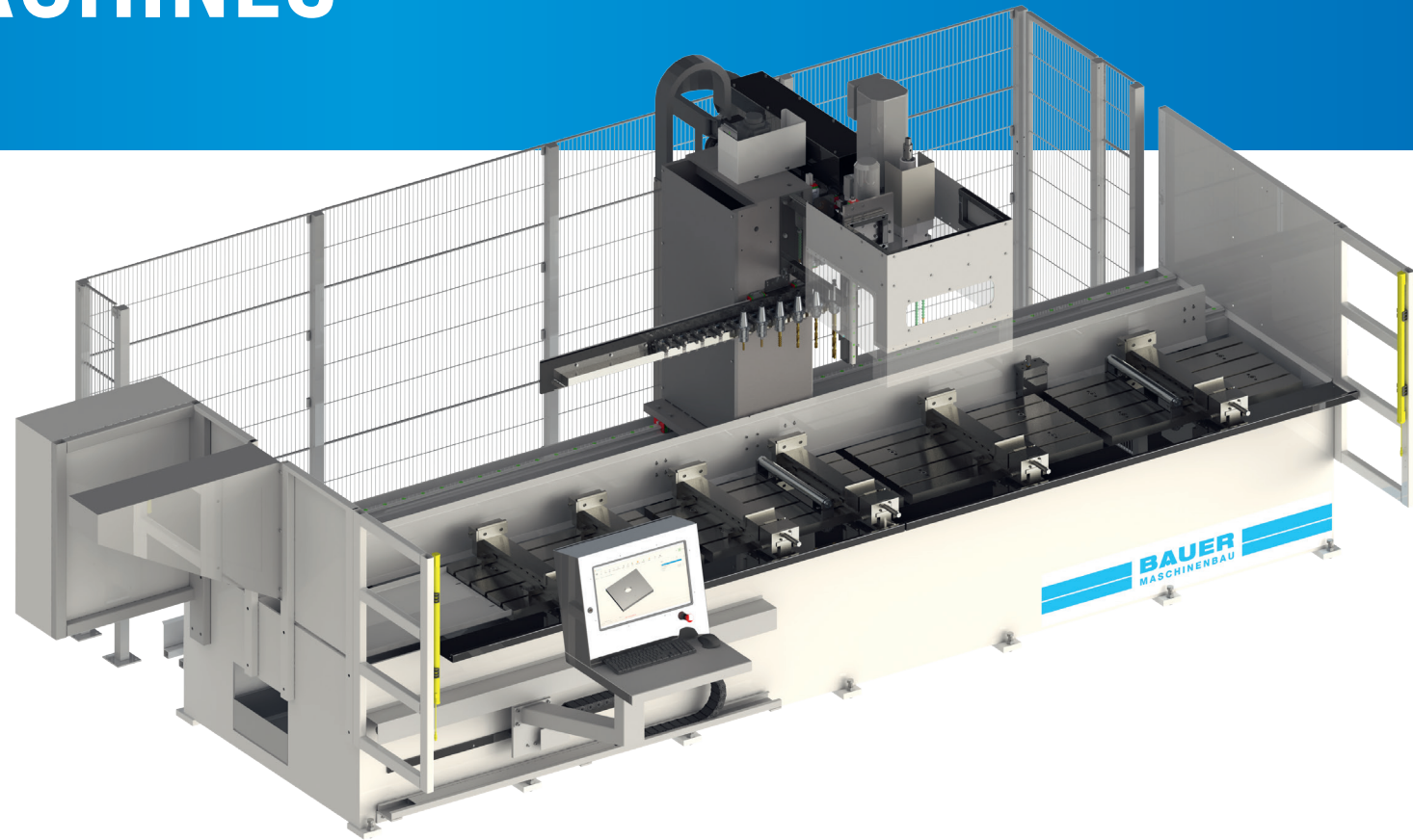
BOHRMAX MACHINES

TECHNICAL DETAILS:

- Automatic tool clamping system
- Tool magazin with 10 tool places
- Light barrier on the operator side
- Movable control panel
- Tool holder SK 40
- Screen 21" PC networkable
- Office license
- Palletizing of workpieces
- Different work areas with their own zero points
- Water coolant

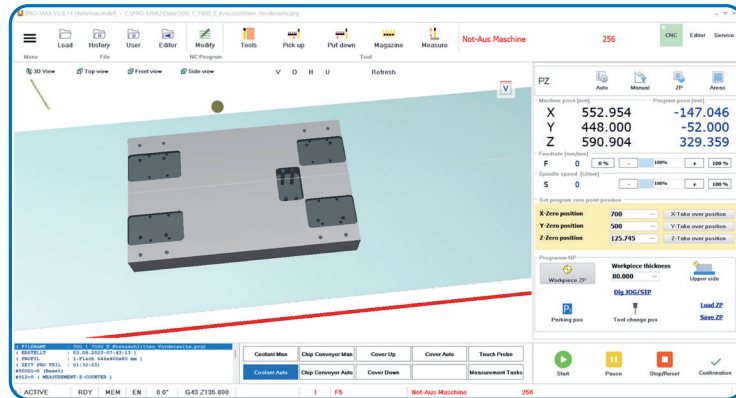
OPTIONS:

- Movable lightbarrier for pendulum machine
- Vices
- Swarf conveyot
- Fence backside
- Spray system
- Safety laser scanner



BOHRMAX Z	Z 20	Z 30	Z 40	Z 60	Z 80	Light 30 L	Light 60 L
X-axis traverse mm	2050	3200	4200	6300	8100	3050	6000
Y-axis traverse mm	620	620	620	620	620	400	400

DEVELOPED FROM PRACTICE FOR PRACTISE

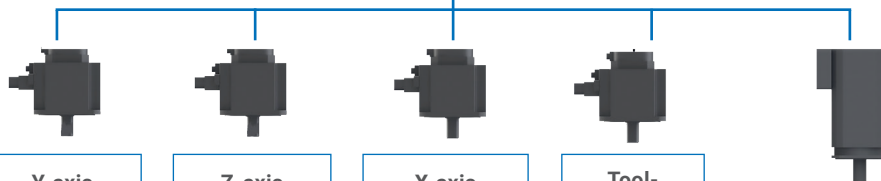
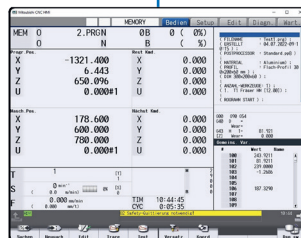


CNC systems end here.
On top we use our **Bauer Control C80**.
Easiest operation.
CNC process in the background.



HIGH QUALITY
MITSUBISHI SERVO DRIVES

AND **POWERFUL CNC**
IN THE BACKGROUND



Y-axis
max. 8 m/min

Z-axis
max. 8 m/min

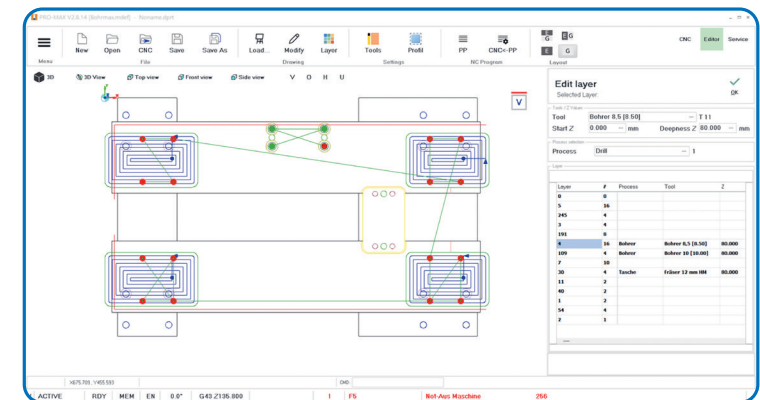
X-axis
max. 25 m/min

Tool-changer

Mitsubishi
high performance
servo spindle motor
up to 5000 rpm

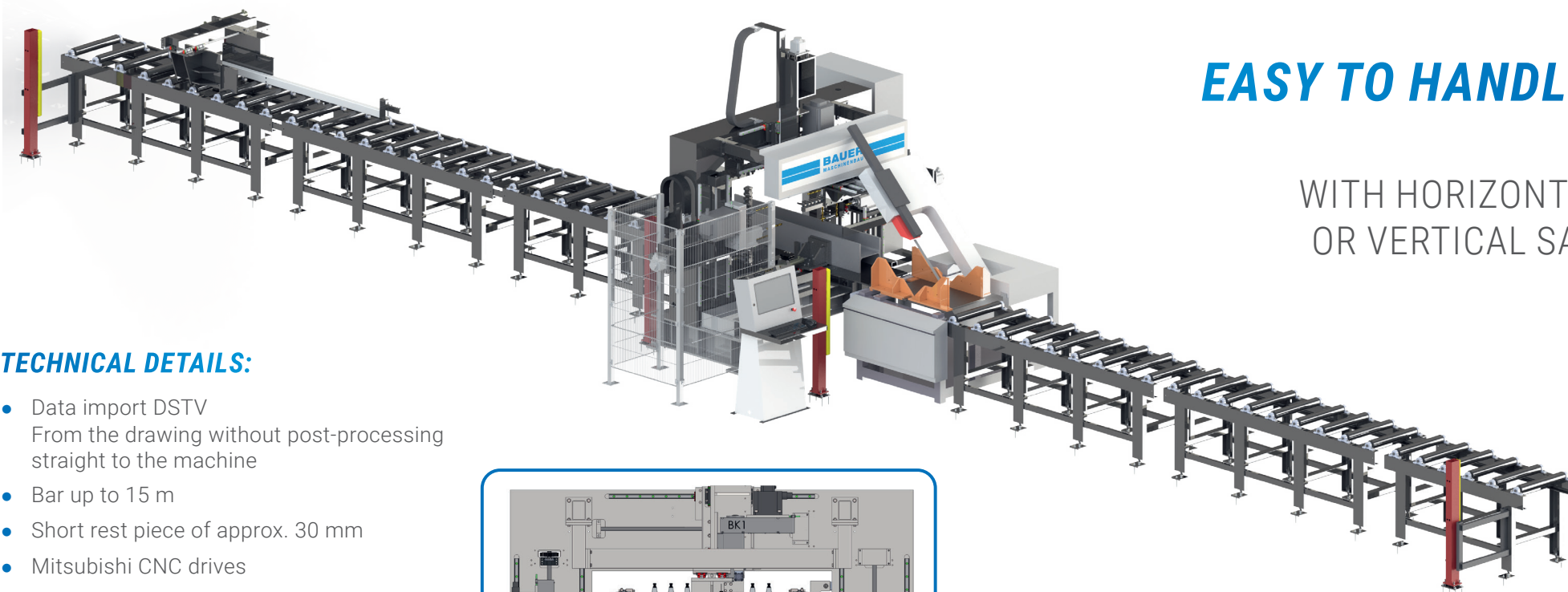
**THERE IS NO SIMPLER EASY-TO-USE
CONTROL ON THE MARKET!**

AFTER A FEW MINUTES
EVERYBODY CAN PROGRAM PARTS.



SIMPLE DXF DATA IMPORT
SIMULATION
DISPLAY OF PROCESSING TIMES

CNC SAW DRILLING MACHINE WITH 3 DRILLING HEADS

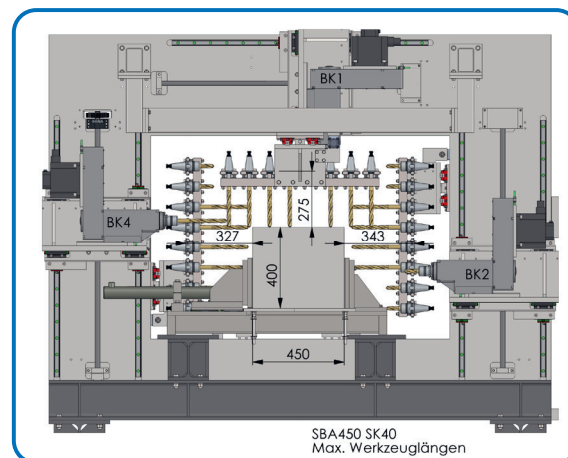


EASY TO HANDLE!

WITH HORIZONTAL
OR VERTICAL SAW

TECHNICAL DETAILS:

- Data import DSTV
From the drawing without post-processing
straight to the machine
- Bar up to 15 m
- Short rest piece of approx. 30 mm
- Mitsubishi CNC drives
- Robust design
- Drive motor 5 kW
- High accuracy due to servo motors
and ball screw spindle



**EASIER IS
NOT POSSIBLE!**